

## 17\_08 Iplot Dialog Modelss and Auto-Dismiss Features

### Question:

When plotting through the iPlot dialog box in Microstation, the plot name and scale will revert back to their default values. This occurs when making more than one plot while in a Microstation file. What is the cause of this and is there a fix?

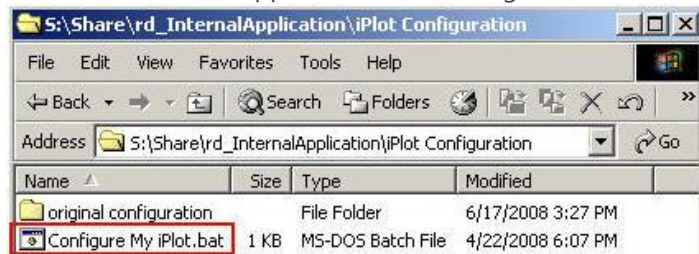
### Answer:

With the rollout of new Roadway workstations, an advance feature that gives the users the ability to manipulate the design file while the iPlot dialog box is active has been enabled. This advance feature is referred to as "modeless" state.

The problem with the iPlot dialog box in modeless state is that once the plot has been submitted and an iParm file has been created, all the keyin setting will revert back to it's initial state. Meaning the plot name, scale, rotation, and other values goes back to the initial default value. This is referred to as Synchronize IPARM and only applies to the iPlot dialog box in a modeless state.

The simple fix is to close the iPlot dialog box once the plot has been submitted and the iParm file has been created. To automatically do this, go to the folder below and double click on the "Configure My iPlot.bat" file.

S:\Share\rd\_InternalApplication\iPlot Configuration



This iPlot configuration file enabled a few features. Two main ones are:

1. iPlot Dialog Box in Modeless State (Manipulate DGN File while iPlot Dialog Box is Active)
2. iPlot Dialog Box in Auto Dismiss Mode (Automatically Closes after Submitting Plots)

Auto Dismiss is similar to Microsoft Office product features. Once the prints has been submitted, the dialog box closes. Also consider that our work currently involves plotting several models (sheets and design) while in a file. Case with our public hearing maps (sheet models) and cross section XPL's (design models) in a single file. Future plans to put plan and profile sheets in models are in the works. Auto Dimiss will help avoid some of these plotting issues in the future. It is important to mention that this only affects the iPlot Dialog box while in a Microstation file, and NOT iPlot Organizer.